



DEPTHS
Depths are in metres and are reduced to chart datum being 2.90m below Ordnance Datum (Newlyn), which approximately the level of the Lowest Astronomical Tide.

HEIGHTS
Heights are in metres. Underlined figures show heights above Chart Datum.

DEPTH COLOUR TABLE

0m, 10m
10m, 12m
12m, 17m
17m

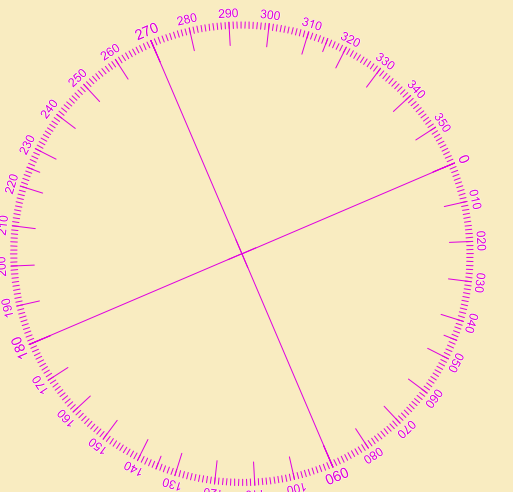
POSITIONS
Positions are referred to OSGB36 National Grid Datum.

BERTH LIMITS
The pecked lines indicate the berth limits of 10' at 'Sheerness Docks'.

TOPOGRAPHY
The shore features on this chart are based largely on Ordnance Survey digital mapping data with permission of HMSO. © Crown Copyright 2023. Peel Licence Number 100018033.

NOTES
While every care has been taken in the preparation of the information relating to the soundings shown on this chart, PEEL PORTS MEDWAY make no warranty as to the accuracy and will not accept any responsibility whatsoever arising from errors and omissions or for any consequence arising therefrom.

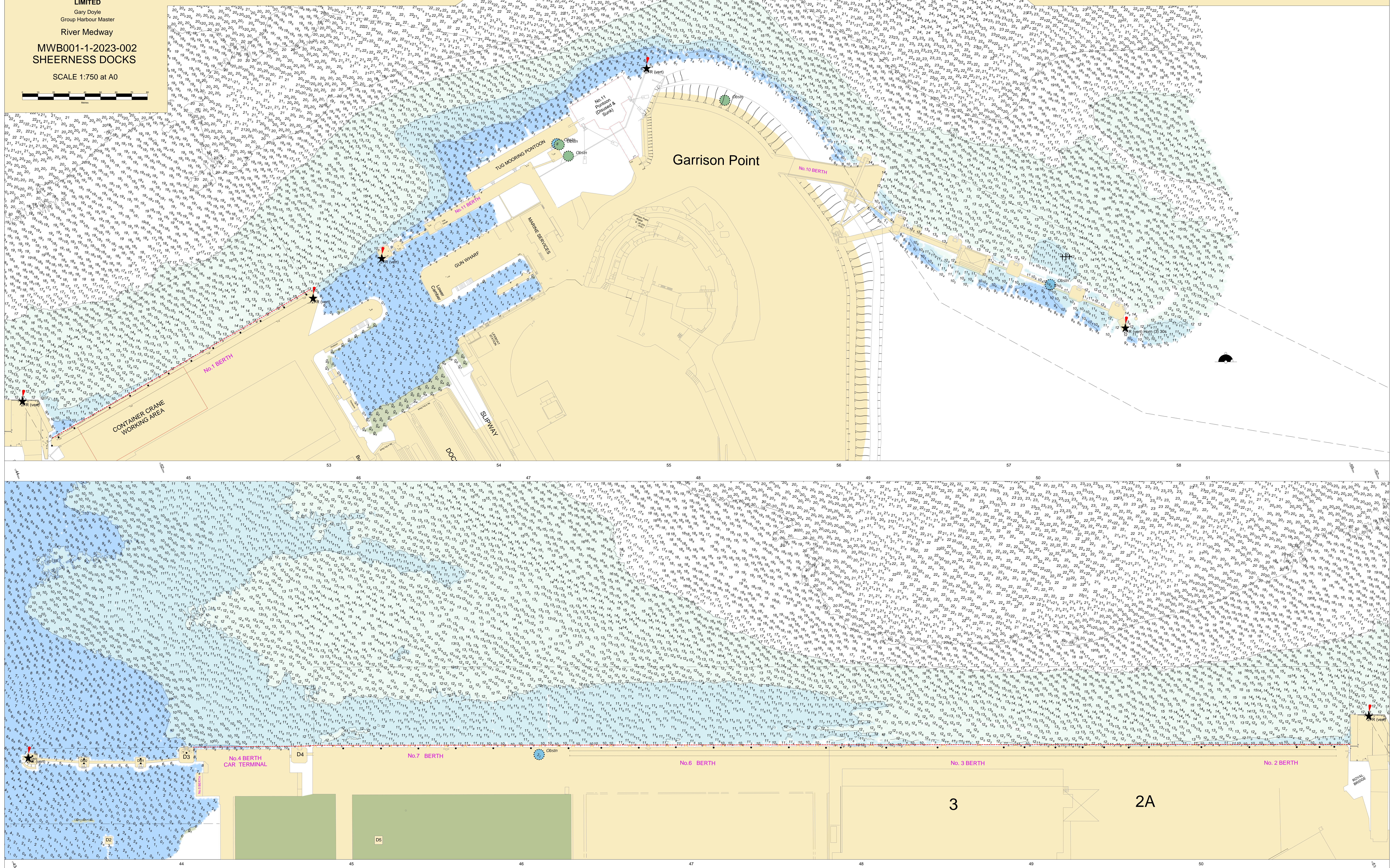
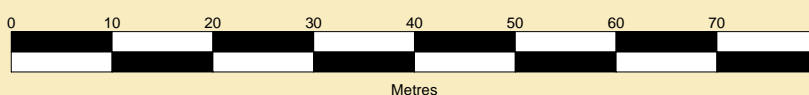
Surveyed by: RSL
Processed by: WLH & RK
Checked by: WLH
Surveyed: 20th October 2023 to 13th November 2023
Issued: 11th December 2023



PORT OF SHEERNESS LIMITED
Gary Doyle
Group Harbour Master

River Medway
MWB001-1-2023-002
SHEERNESS DOCKS

SCALE 1:750 at A0



3

2A

