



MEMORANDUM

To See Distribution
From Hydrographic and Dredging Manager
Date 13th November 2012
Ref Hyd-Pubs/Soundings

SOUNDING SHEETS

Please find enclosed for your retention, the undernoted number of copies of the latest soundings obtained in the following place.

<u>Drawing No.</u>	<u>Issue Date</u>	<u>Area</u>
HM 1150-2-4	13/11/12	KYLES of BUTE North and South Channels

OBSTRUCTIONS, FEATURES, OBSERVATIONS NOTED

HM 1150-2-4

Obstructions (Channel and Berths only) – None

Features – None

Observations – Small changes in siltation patterns in North Channel between Eilean Mor buoy and Eilean Buidhe East buoy.

Note – The corruption of a single survey line lead to small gaps in the resulting grid model. The depths surrounding these areas were largely unchanged since the previous survey (13/04/09) and so the decision was made to use data from the previous survey to interpolate the gaps. The areas affected are in deep water approximately 340m to the West of Eilean Fraoich buoy.

Please **destroy** the following drawings :-

HM 1150-2-3

Distribution :

Managing Director (SharePoint)	(1)
Pilots (SharePoint)	(1)
U.K.H.O. (Digital copy)	(1)
S.E.P.A. (Digital copy)	(1)
Svitzer Marine Ltd (Marine Dept.)	(1)
Harbour Master	(1)
Deputy Harbour Master	(1)
Marine Department Office, Senior Pilot	(1)
Hydrographic and Dredging Manager	(1)
Hydrographic Office	(1)
W.B. "Torch"	(1)
H.S.L. "Newark"	(1)
P.B "Mount Stuart"	(1)
P.B "Gantock"	(1)
P.B "Toward"	(1)
Marine Response Centre File	(1)
Clyde Marine Ltd	(1)
Marine Policing Unit	(1)
Waverly Excursions Ltd.	(1)

Douglas Hoad

Douglas Hoad
Hydrographic & Dredging Manager

File = S:\Hydrography\Corporate\HYDROG\Hydrographic Publications\SOUNDING SHEETS\MEMOLIST\Memo
20121113.doc

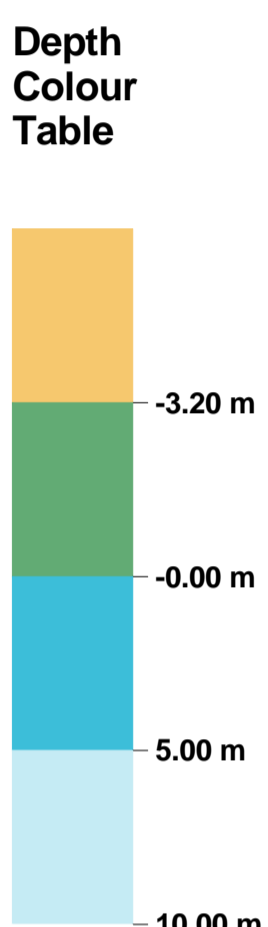
CLYDEPORT OPERATIONS LTD

Area: Kyles of Bute
Title: North and South Channels
Scale: 1:1000
Issue Date: 13.11.12
Surveyed: 19.10.12 (See note)
Sona: Reson 7125 Multibeam
Drawing No: HM1150-2-4

Soundings in metres and depths in fathoms are reduced to Chart Datum. Figures with a fractional part are rounded to the nearest 0.1. Chart Datum is 1.04m above O.D. Mean High Water Springs. Soundings are based on the position of the centre of the sounding.

HARBOUR MASTER
Greenock Ocean Terminal
Patrick Street
Greenock, PA16 8JU
Tel: 01475 726171
Fax: 01475 724281

CLYDEPORT



Note:
Some small data gaps, in deep water approx 340m West of Eilean Fraoich buoy, have been interpolated from a previous survey (13.04.09). See relevant Memo for further details.

