



PORT OF SHEERNESS LIMITED

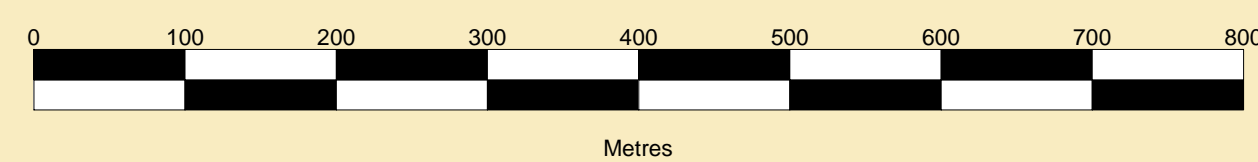
Gary Doyle
Group Harbour Master

River Medway

1002A-1-23-001

SHEERNESS HARBOUR & SALT PAN REACH

SCALE 1:5000 at A0



DEPTHS
Depths are in metres and are reduced to chart datum which is 2.90m below OD(N) in Salt Pan Reach.

HEIGHTS
Heights are in metres. Underlined figures show depths in metres above Chart Datum.

DEPTH COLOUR TABLE

- (-1.5m,0m)
- (0m,10m)
- (10m,12.5m)
- (12.5m,15m)
- (=15m)

POSITIONS
Positions are referred to OSGB36 National Grid Datum.

AUTHORISED CHANNEL / FOUL AREAS / BERTH LIMITS

The pecked lines indicate the limits of the authorised channel, foul areas & IOG berth limits

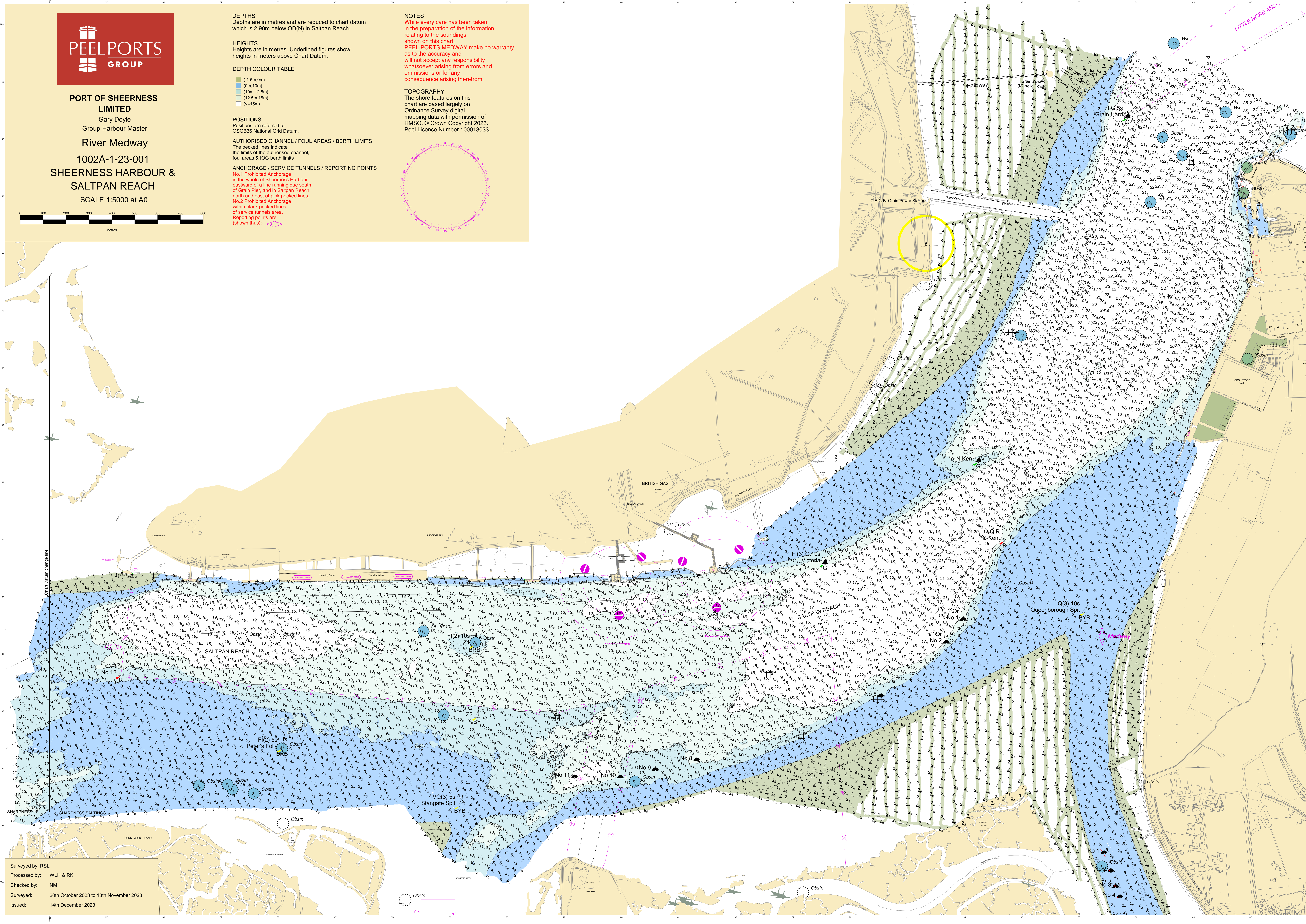
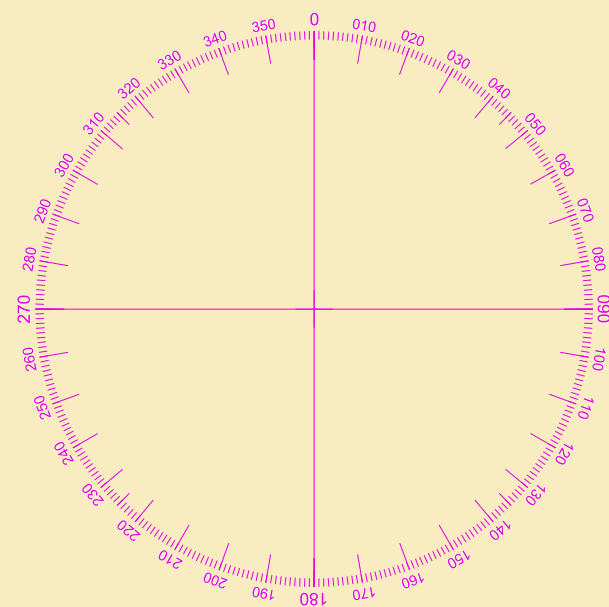
ANCHORAGE / SERVICE TUNNELS / REPORTING POINTS

No.1 Prohibited Anchorage in the whole of Sheerness Harbour eastward of a line running due south of Grain Pier, and in Salt Pan Reach north and east of pink pecked lines.

No.2 Prohibited Anchorage within black pecked lines of service tunnels area. Reporting points are (shown thus):

NOTES
While every care has been taken in the preparation of the information relating to the soundings shown on this chart, PEEL PORTS MEDWAY make no warranty as to the accuracy and will not accept any responsibility whatsoever arising from errors and omissions or for any consequence arising therefrom.

TOPOGRAPHY
The shore features on this chart are based largely on Ordnance Survey digital mapping data with permission of HMSO. © Crown Copyright 2023. Peel Licence Number 100018033.



Surveyed by: RSL
Processed by: WLH & RK
Checked by: NM
Surveyed: 20th October 2023 to 13th November 2023
Issued: 14th December 2023