

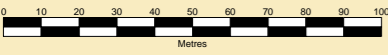


CLYDEPORT OPERATIONS LIMITED
CAPT S.F. GALLIMORE
Group Harbour Master

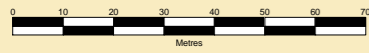
River Clyde

HM 1007-1-35 & HM 1008-1-55 DIESEL ENGINE WHARF PASSAGE PLAN

MAIN CHANNEL
SCALE 1:2000 at A3



DIESEL ENGINE WHARF
SCALE 1:1500 at A3



DEPTHS
Depths are in metres and are reduced to chart datum being 2.32m below Ordnance Datum (Newlyn), which is approximately the level of Lowest Astronomical Tide.
Vessel owner should contact Berth Operator to confirm prevailing depths at the berth.

HEIGHTS
Heights are in metres. Underlined figures show heights above Chart Datum.

DEPTH COLOUR TABLES

Diesel Wharf	Main Channel
(-1.4m,0m)	(-1.4m,0m)
(0m,1.2m)	(0m,3m)
(>= 1.2m)	(3m,6.8m)
	(6.8m,7.4m)
	(>= 7.4m)

POSITIONS
Positions are referred to OSTN02 Datum.

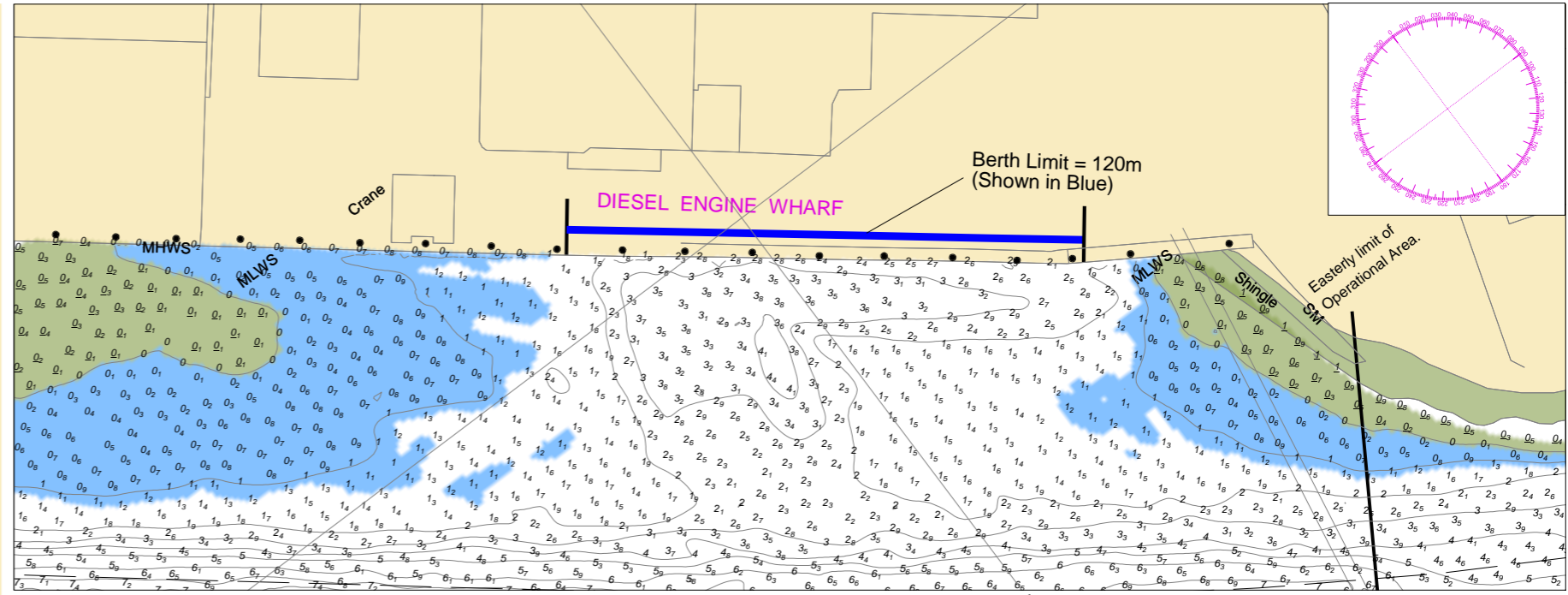
AUTHORISED CHANNEL
The pecked lines indicate the limits of the authorised channel and SR berth limits.

TOPOGRAPHY
The shore features on this chart are based largely on Ordnance Survey digital mapping data with permission of HMSO. © Crown Copyright 2015. Peel Licence Number 100018033.

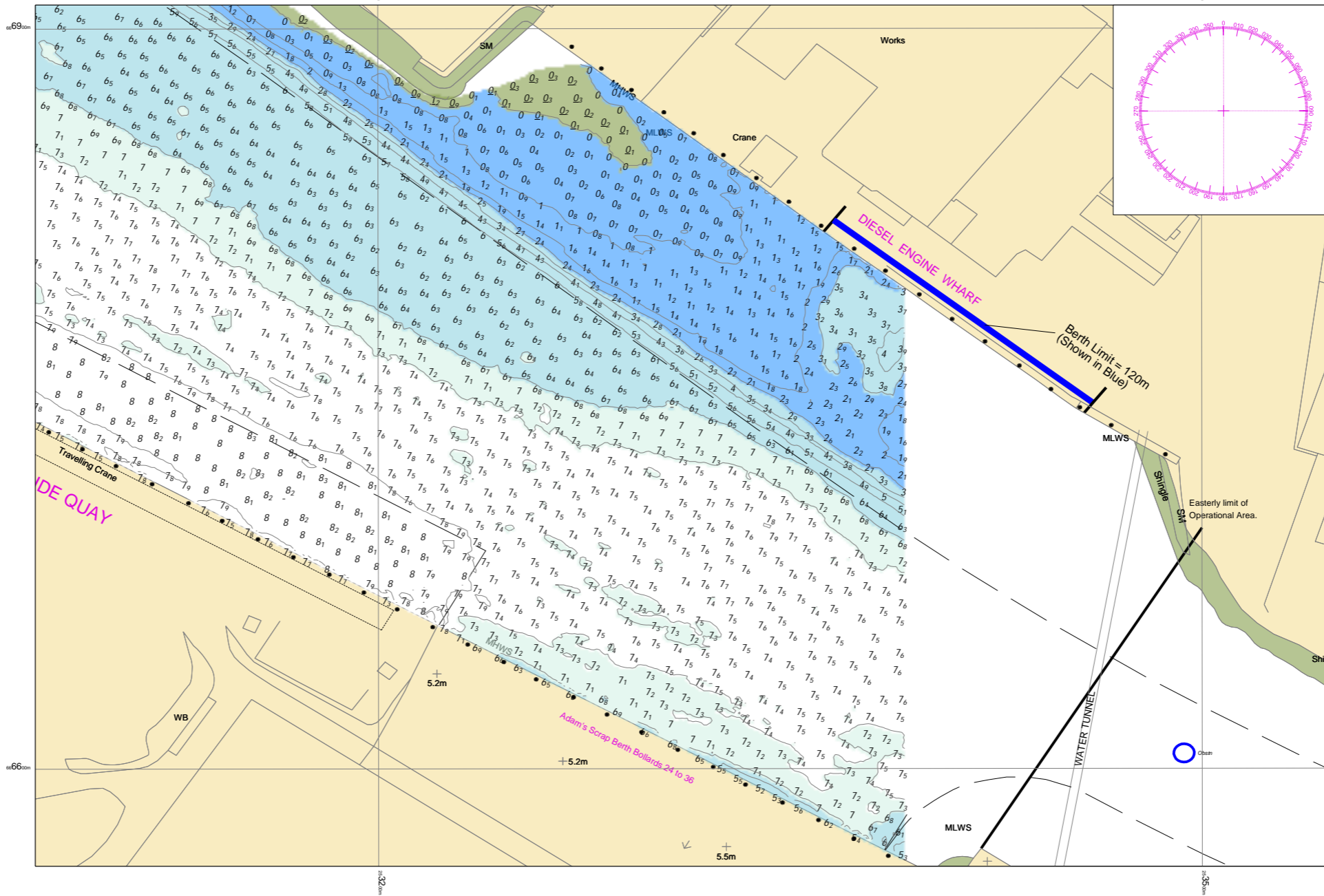
OBSTRUCTIONS
Red Rings indicate obstructions on the seabed. Please see obstruction report for more detail.

Blue Rings indicate features on the seabed. Please see geature report for more detail.

Diesel Engine Wharf Chartlet (HM 1007)



Main Channel Chartlet (HM 1008)



Passage Plan Information

Vessel _____
Date _____
Pilot _____

Tides for Expected Sailing

Date	HW	HT

Note :
Maximum Sailing Draft = Height of tide at Glasgow (+1.2m) - 10%

- V/L may sit on bottom at LW.
- V/L will sail HW – 1hr.

Passage Plan Input Data

HM 1007-1-35

Surveyed by: Clydeside Surveys
Processed by: Clydeside Surveys
Checked by: Russell Bird (GHDM)
Surveyed: 29/06/15
Issued: 24/07/15

HM 1008-1-55

Surveyed by: Clydeside Surveys
Processed by: Clydeside Surveys
Checked by: CMcF
Surveyed: 10/02/16
Issued: 19/02/16