



### MERSEY DOCKS AND HARBOUR COMPANY LTD

Gary Doyle  
Group Harbour Master

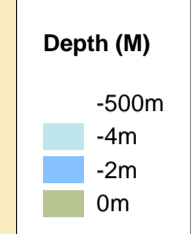
River Mersey

### LPR002\_12\_2018\_001 Middle Deep Anchorage

Surveyed by: WLH  
Processed by: WLH  
Checked by: WLH  
Surveyed: 17th April 2018  
Issued: 26th April 2018

**DEPTHS**  
Depths are in metres and are reduced to chart datum being 4.93m below Ordnance Datum (Newlyn), which is approximately the level of Lowest Astronomical Tide.

**HEIGHTS**  
Heights are in metres. Underlined figures show heights above Chart Datum.

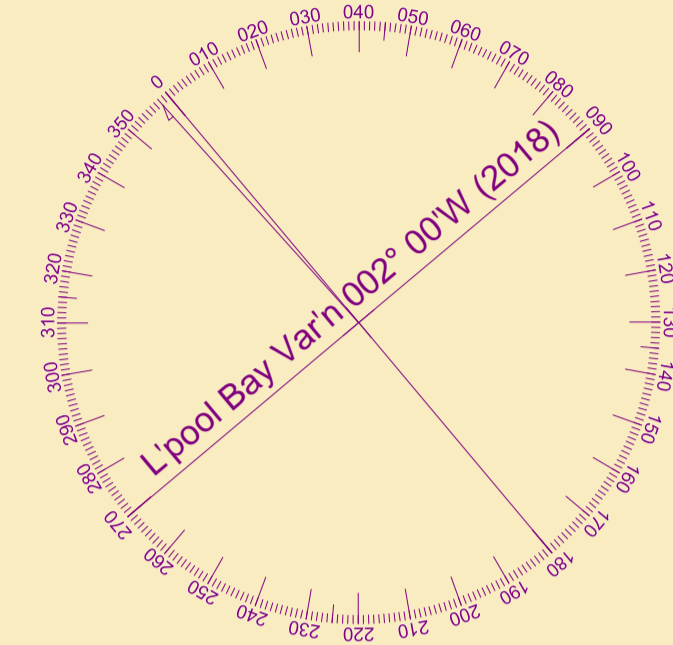


**TOPOGRAPHY**  
The shore features on this chart are based largely on Ordnance Survey digital mapping data with permission of HMSO. © Crown Copyright 2018. Peel Licence Number 100018033.

**FLATS & SANDBANKS**  
**CAUTION OWING TO FREQUENT CHANGES IN DEPTHS AND POSITIONS OF FLATS AND SANDBANKS THIS CHART SHOULD BE USED WITH CAUTION.**

**POSITIONS**  
Positions are referred to OSGB36 National Grid Datum.

**UKHO & NTMS**  
When using this chart please refer to UKHO Admiralty Publications and also local Notice to Mariners and Navigational Warnings.



SCALE 1:5000 at A1

