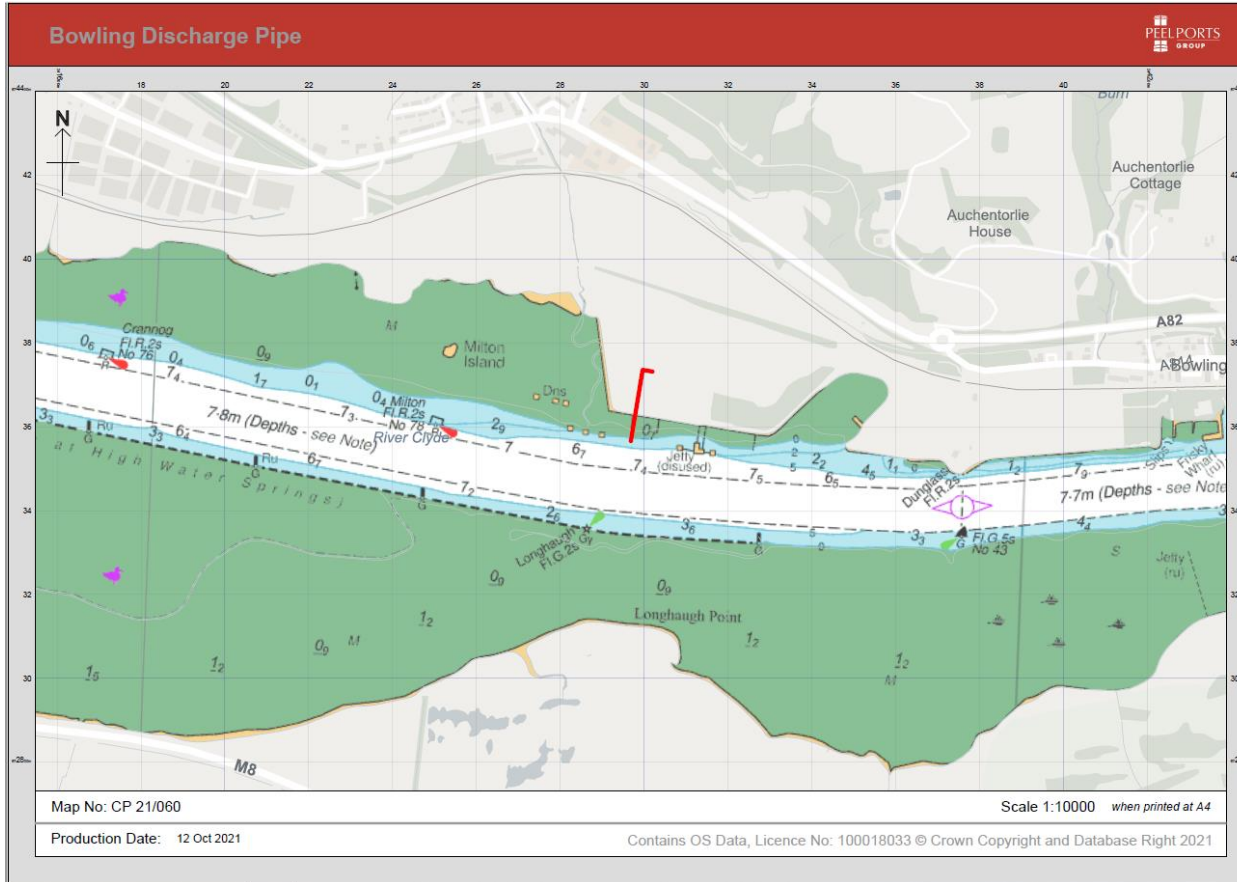


NOTICE TO MARINERS No 05/24 RIVER CLYDE – FORMER BOWLING TERMINAL TEMPORARY DISCHARGE PIPELINE

Chart 2007 Plan A

Mariners are advised that the temporary discharge pipeline installed at Bowling Terminal will remain in position until the end of 2024 and the location is indicated on the following drawing:



To mark the position of the pipeline, a Special Mark is deployed in position 55°55.766'N 4°30.902'W with the characteristics FI Y 5s.

Estuary Radio may be contacted on VHF 12 or on 0151-9449 6651 (Recorded Line).