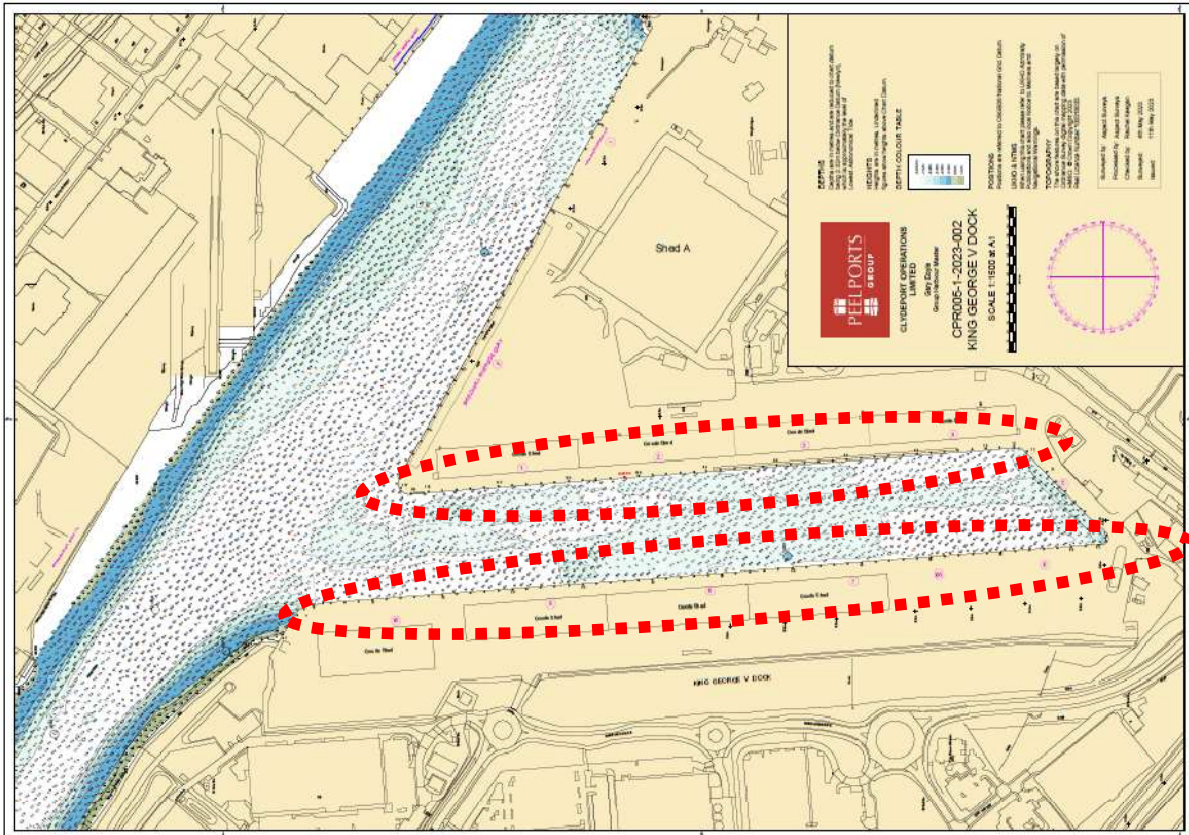
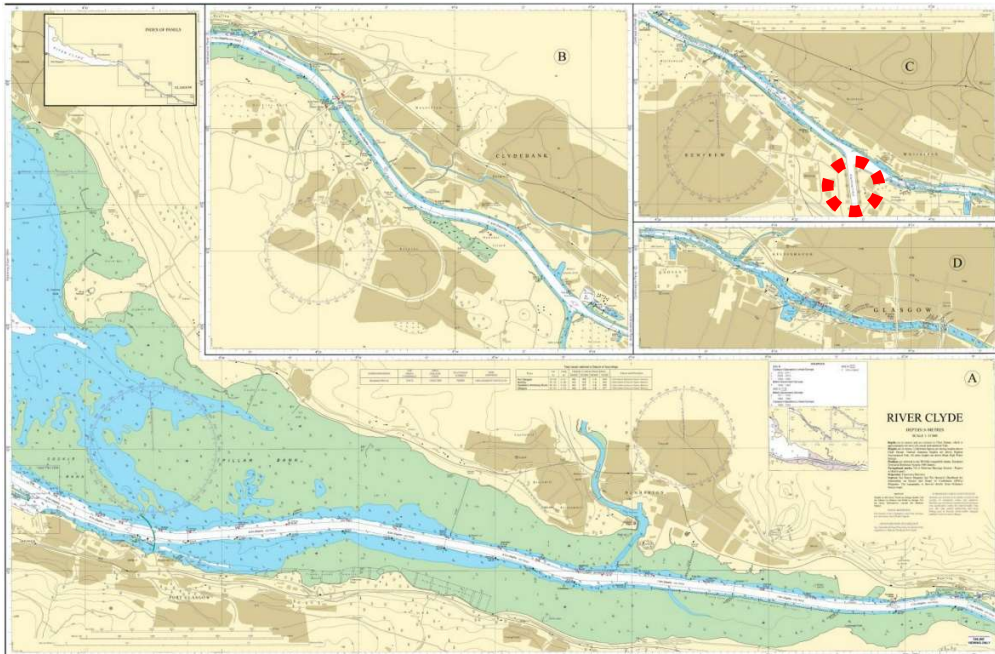


BERTH DATA SHEET

KING GEORGE V DOCKS - GLASGOW



BERTH DATA SHEET

KING GEORGE V DOCKS - GLASGOW



PARTICULARS/BASIC INFORMATION

Admiralty Chart No.	2007 Plan C	Survey Drawing No	CPR 005-1
Min. Depth Alongside	Refer Survey Drawing	Fendering	Occasional tyres, Yokohama fenders on request.
Quay Design	Solid concrete wharf	Avg Water Density	1005.5 kg/m ³
Latitude	55°52.18'N	Longitude	004°21.16'W
Quay length overall	640m (East) Berths 1-4 810m (West) Berths 6-10	Eastings/Northings	415359, 6192408
No of berths	10	SWL Bollards	75 tonnes
Max vessel LOA	180m (LOA > 180m required HM consultation)	Avg bollard spacing	15m
Max vessel beam	32m	Line of the berth	174°/354°
Air Draught restrictions	Erskine Bridge**	Quayside SWL	400T
ISPS Status	Compliant	Height of cope edge*	6.97m

*from Chart Datum

** up to 49.8m from MHWS unrestricted, up to 53.3m from MHWS 3 months' notice

QUAYSIDE FACILITIES – BY PRIOR ARRANGEMENT

Fresh Water	Y	Shore Power	Upon request
Port Waste	Y	Cranes	Y

TIDAL INFORMATION – BASED ON Glasgow

HAT	5.3	MHWS	4.8m
MHWN	3.9m	MLWN	1.8m
MLWS	0.7m	LAT	-0.2
Comments			

BERTH OPERATOR

NAME	Peelports	CONTACT DETAILS	0141 445 2241
------	-----------	-----------------	---------------

COMMENTS:

Refer to Clydeport Towage Matrix for details of towage requirements for vessels to KGV.