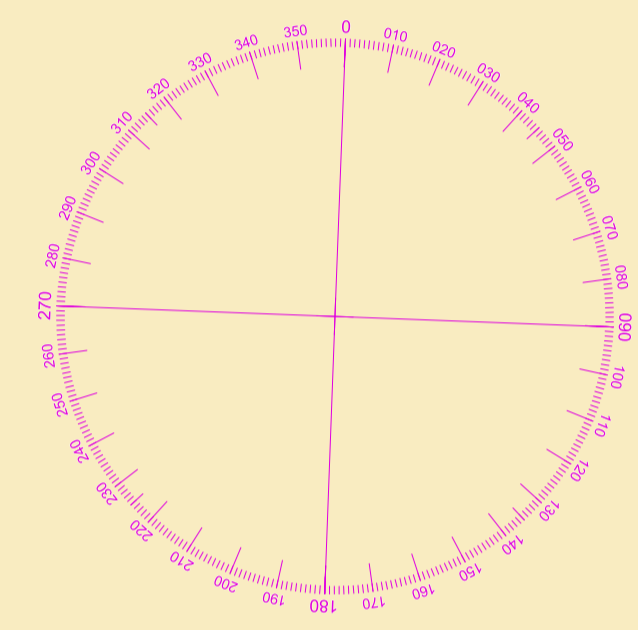
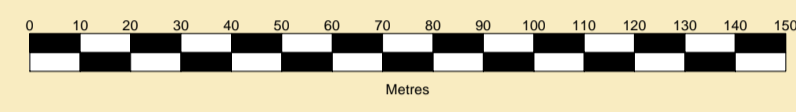




**CLYDEPORT OPERATIONS LIMITED**  
 GARY DOYLE  
 Group Harbour Master

River Clyde  
**CPR017-1-2023-002**  
**PILLAR BANK**

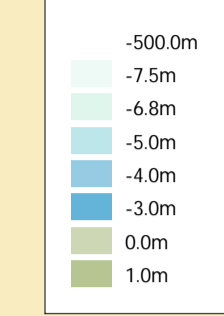
SCALE 1:1500 at A1



**DEPTHS**  
 Depths are in metres and are reduced to chart datum being 1.68m below Ordnance Datum (Newlyn), which is approximately the level of Lowest Astronomical Tide.

**HEIGHTS**  
 Heights are in metres. Underlined figures show heights above Chart Datum.

**DEPTH COLOUR TABLE**

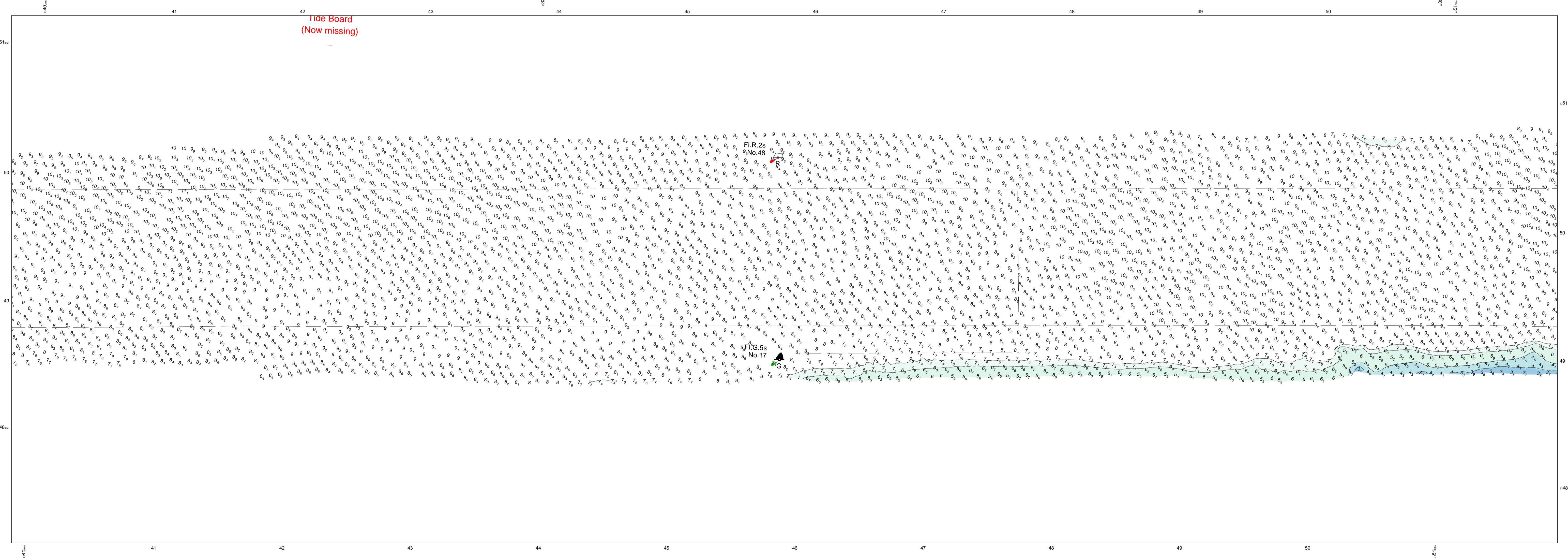
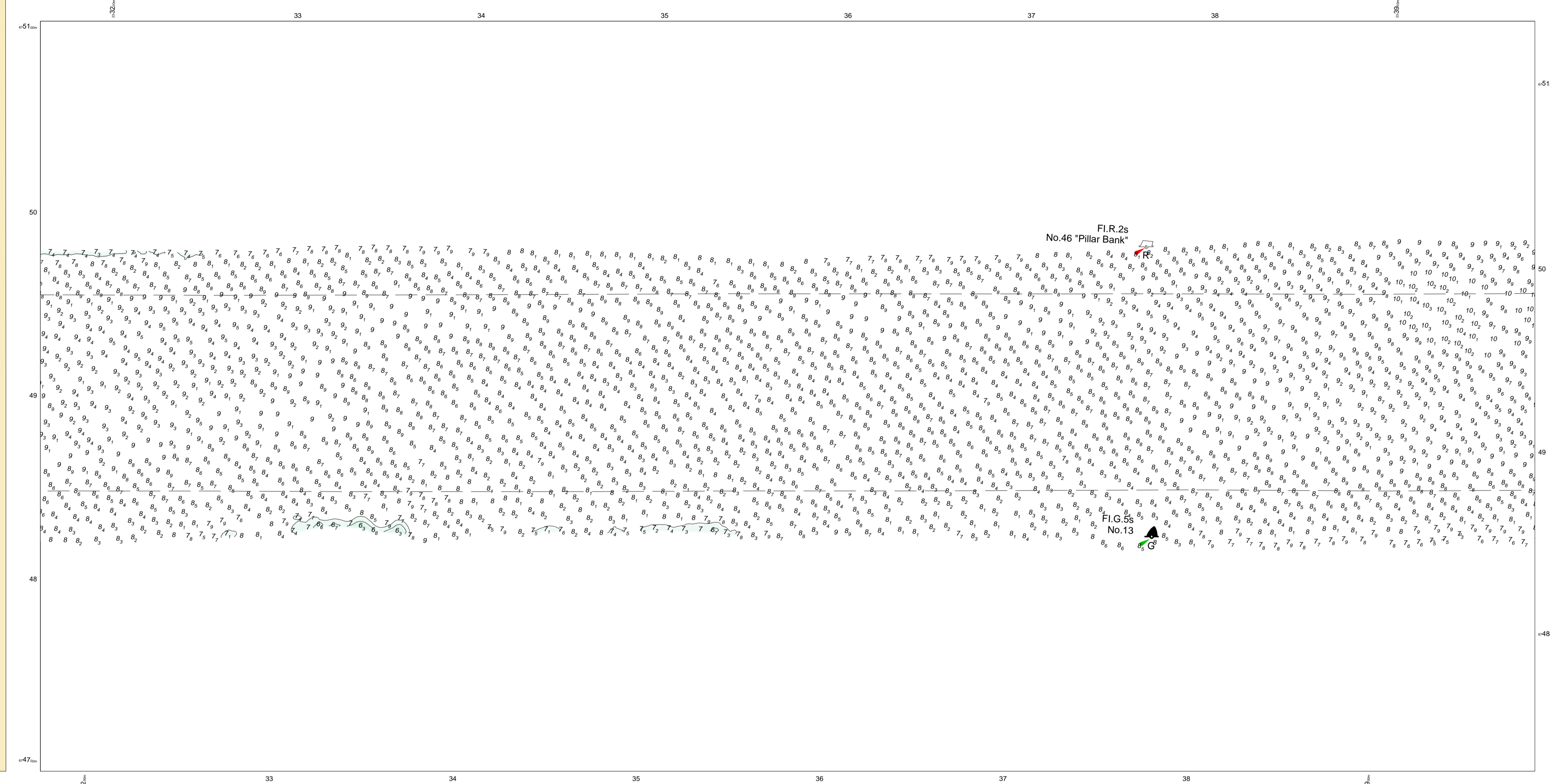


**POSITIONS**  
 Positions are referred to OSGB36 National Grid Datum.

**AUTHORISED CHANNEL**  
 The pecked lines indicate the limits of the authorised channel.

**TOPOGRAPHY**  
 The shore features on this chart are based largely on Ordnance Survey digital mapping data with permission of HMSO. © Crown Copyright 2023. Peel Licence Number 100018033.

Surveyed by: VO  
 Processed by: VO  
 Checked by: Niall Mason  
 Surveyed: 14 Sep 2023  
 Issued: 20 Sep 2023



Tide Board  
 (Now missing)