



MERSEY DOCKS AND HARBOUR COMPANY LTD

Gary Doyle
Group Harbour Master

River Mersey

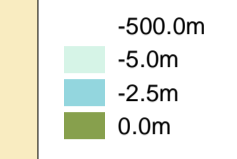
**LPR002_4_2023_002C
Cammell Laird's Wall**

Surveyed by: BWL
Processed by: BWL
Checked by: NM
Surveyed: 25th March 2024
Issued: 26th March 2024

DEPTHS
Depths are in metres and are reduced to chart datum being 4.93m below Ordnance Datum (Newlyn), which is approximately the level of Lowest Astronomical Tide.

HEIGHTS
Heights are in metres. Underlined> figures show heights above Chart Datum.

Depth (M)



POSITIONS

Positions are referred to OSGB36 National Grid Datum.

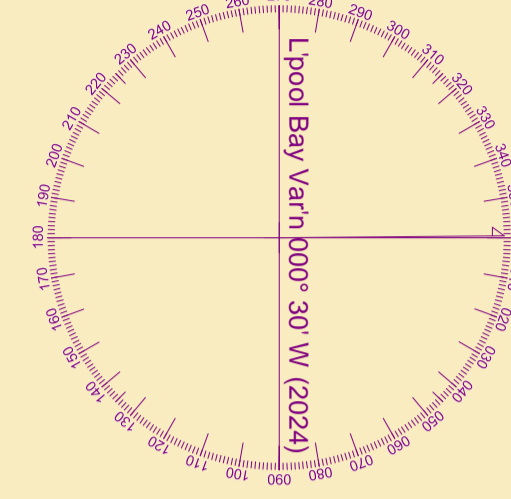
UKHO & NTMS

When using this chart please refer to UKHO Admiralty Publications and also local Notice to Mariners and Navigational Warnings.

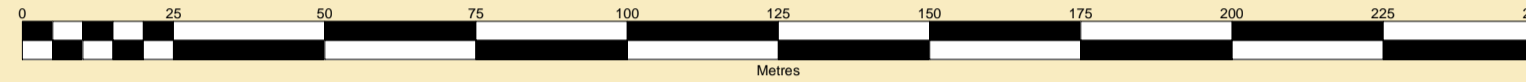
TOPOGRAPHY
The shore features on this chart are based largely on Ordnance Survey digital mapping data with permission of HMSO. © Crown Copyright 2024. Peel Licence Number 100018033.

FLATS & SANDBANKS

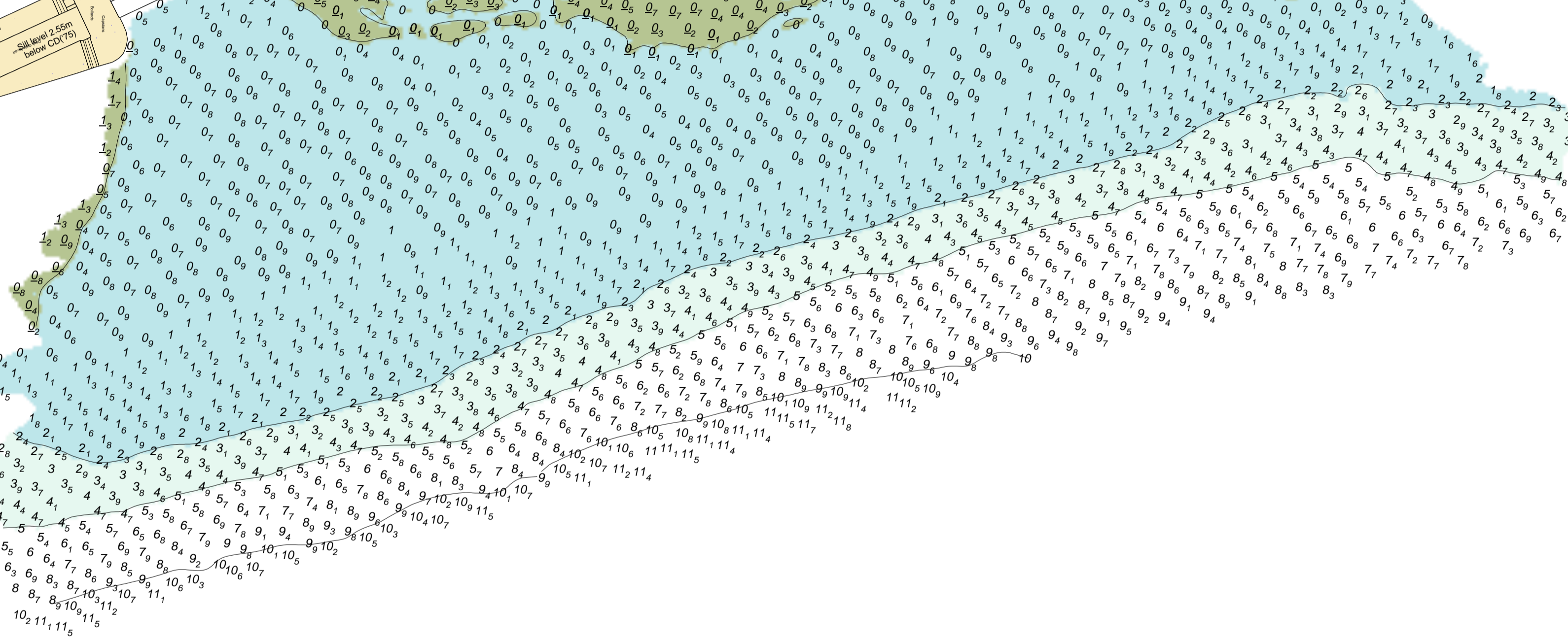
CAUTION OWING TO FREQUENT CHANGES IN DEPTHS AND POSITIONS OF FLATS AND SANDBANKS THIS CHART SHOULD BE USED WITH CAUTION.



SCALE 1:1250 at A1



Pontoon and Moorings in this area
(see MD&HC Ltd Notice to Mariners No 24 - 2012.)



See MD&HC Ltd Notice to Mariners No 24 - 2012